

---

---

# DISENA

ARCHITECTS

---

# Welcome



At the heart of every great space is a story one that begins with a vision and is brought to life through design.

We believe in the power of thoughtful, intentional interiors that elevate daily living and reflect unique identities.

Our work is driven by purpose, passion, and precision transforming ideas into environments that inspire, comfort, and endure.

Thank you for stepping into our world.

**GHASSAN ALNAFEA**

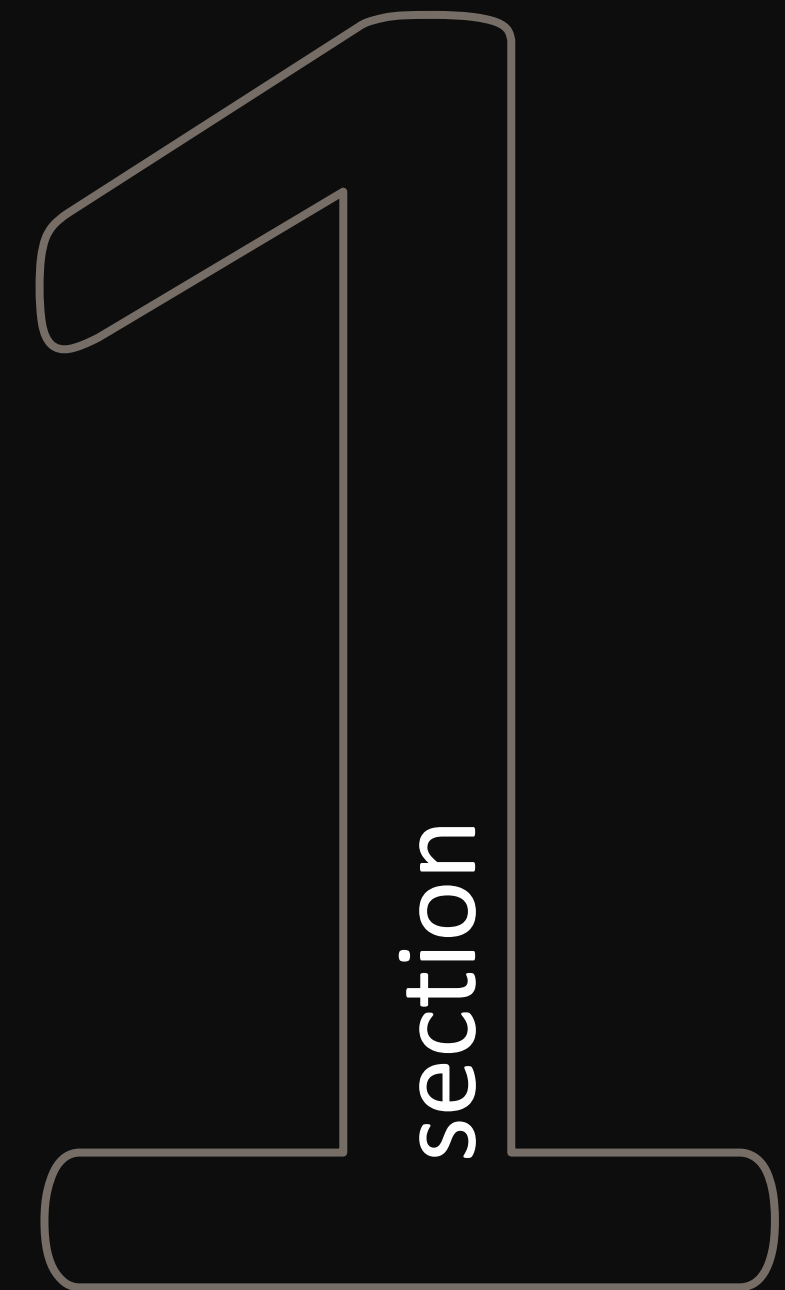
*CEO & Founder*

---

# Contents

1. ABOUT US
2. MISSION AND VISION
3. SERVICES
4. PROJECTS
5. PROCESS
6. CONNECTS

# Company Overview





# About Us

At DISENA, we believe that great design is born from the seamless fusion of creativity, function, and context. We specialize in delivering architecture and interior solutions that elevate everyday spaces and reflect the unique identity of our clients.

Our multidisciplinary team is committed to crafting meaningful environments from concept through execution with precision, passion, and purpose. Whether residential, commercial, or hospitality, our projects are guided by innovation, attention to detail, and timeless design principles.



*"As we strive to better ourselves, we create better places."*

-  
Norman Foster

# GHASSAN ALNAFEA

Founder & CEO – DISENAARCHITECTS

As the founder of DISENA,

I lead with a vision rooted in design excellence, innovation, and purpose-driven architecture. Our mission is to craft environments that balance aesthetic integrity with functionality transforming concepts into experiences that enrich lives and elevate spaces. With a foundation in architecture and a passion for detail, I've built a team that thrives on collaboration, creativity, and delivering value to every client. From residential compounds to commercial landmarks, we approach each project as a unique narrative told through thoughtful design and executed with precision.



- Design should solve real-world problems, not just decorate space
- Every project deserves a tailored, human-centered approach
- Sustainability and timeless design are not trends, but essentials

# MISSION & VISION





# Our Vision



## Empower Local Identity

We believe architecture should reflect the culture and soul of its surroundings. By integrating Saudi-made materials and craftsmanship, we bring authenticity to every space we create.



## Elevate Through Innovation

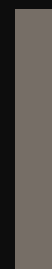
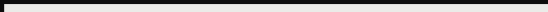
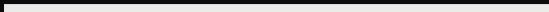
Our designs merge modern function with timeless character. By sourcing locally and designing responsibly, we shape environments that inspire and endure.



## Build for the Future

We're not just building structures — we're building a legacy. Our vision is to lead a new era of Saudi architecture that champions local talent and contributes to the Kingdom's design narrative globally.

# Milestones



2019

Founded with a vision to deliver integrated design and fit-out solutions tailored to client needs.

2020

Secured our first large-scale residential compound project, expanding our in-house design team.

2021

Launched full-service fit-out operations and established partnerships with key suppliers.

2022

Delivered multiple hospitality and residential projects

2023

Recognized as a trusted partner in the industry with a growing portfolio of highend developments.

A black and white photograph of a person walking across a dark, flat surface towards a large, illuminated wall. The wall is covered in a pattern of small, hexagonal tiles. A large, dark rectangular area on the wall displays the word "Goals" in white, sans-serif font.

# Goals

At DISENA, our goals are rooted in delivering design excellence, project integrity, and innovative solutions that respond to both client needs and contextual demands. We aim to redefine the user experience through architecture that is sustainable, meaningful, and timeless.

- » Client-Centered Design: Create spaces that reflect each client's identity, values, and function.
- » Sustainable Practice: Incorporate environmentally responsible methods and materials at every stage
- » Design Innovation: Blend tradition with technology to develop forward-thinking solutions.
- » Quality Execution: Deliver projects with attention to detail, code compliance, and timely coordination.
- » Positive Impact: Shape environments that enhance well-being, community, and purpose.

# Services





# SERVICES



## ARCHITECTURAL SOLUTION

From concept to execution, we deliver architectural designs rooted in context, sustainability, and innovation to meet today's evolving needs.



## INTERIOR DESIGN

We transform spaces with tailored interior concepts that reflect identity, optimize functionality, and enhance user experience across residential and commercial projects.



## LANDSCAPE

We craft outdoor spaces that balance natural beauty with functional design integrating greenery, hardscape, and lighting to bring life to every environment.



## DESIGN EXECUTION

Our turnkey fit-out services ensure seamless transformation from shell to space combining precision, materials, and craftsmanship that align with design intent.



# SERVICES



## DESIGN

We craft innovative and tailored design solutions that reflect your vision and enhance functionality. From concept development to detailed drawings, our team blends creativity with precision to deliver timeless interiors and architectural experiences.



## FIT - OUT

Our fit-out services provide seamless execution from approved designs to final handover. With a focus on quality, materials, and craftsmanship, we ensure that every element is delivered to specification, on time, and ready for immediate use.

# PROJECTS





# HEALTH CLUB

## HEALTH CLUB – EASTERN VILLAGE COMPOUND

A contemporary wellness facility designed to elevate the living experience within the Eastern Village Compound. The health club features a harmonious blend of warm materials, ambient lighting, and refined finishes to promote relaxation, privacy, and rejuvenation.

This space includes a fully equipped gym, spa rooms, sauna, and lounge areas all thoughtfully integrated to support modern health and well-being standards. The design emphasizes fluid spatial flow and premium comfort, delivering a serene environment tailored to residents' wellness needs.







## SPORTS CLUB – EASTERN VILLAGE COMPOUND

# SPORTS CLUB

An exclusive sports facility designed to promote an active and balanced lifestyle within the Eastern Village Compound. The club features a modern, high-performance environment equipped with state-of-the-art fitness equipment and thoughtfully designed workout zones.

The interior is defined by clean lines, natural textures, and optimized lighting to foster energy, focus, and movement. Amenities include cardio and strength training areas, personal training zones, locker facilities, and recovery lounges—offering residents a dynamic and motivating fitness experience that complements contemporary living.





PORTFOLIO







# PORTFOLIO





A photograph of a modern office interior. The space features a mezzanine level with a glass railing and gold-colored metal framing. Below, there are several desks with computers and ergonomic chairs. The floor is made of light-colored wood in a herringbone pattern. A large black rectangle is overlaid on the left side of the image, containing the word 'OFFICE' in white capital letters.

## OFFICE – MARK IT CO.

# OFFICE

An exclusive sports facility designed to promote an active and balanced lifestyle within the Eastern Village Compound. The club features a modern, high-performance environment equipped with state-of-the-art fitness equipment and thoughtfully designed workout zones.

The interior is defined by clean lines, natural textures, and optimized lighting to foster energy, focus, and movement. Amenities include cardio and strength training areas, personal training zones, locker facilities, and recovery lounges—offering residents a dynamic and motivating fitness experience that complements contemporary living.





# PORTFOLIO





## IWAN ALJAMEE PROJECT

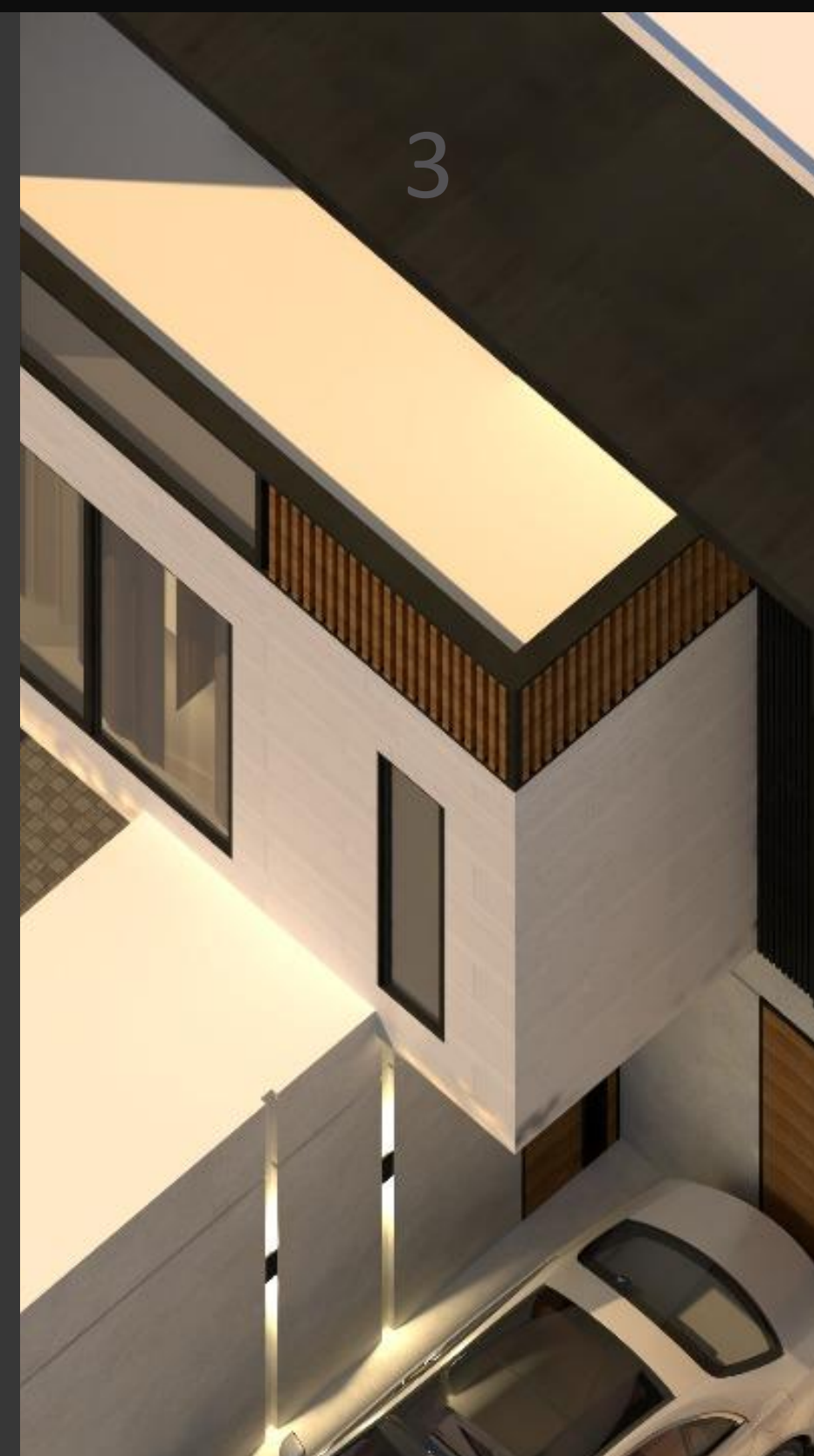
Iwan Aljamee is a residential project consisting of three standalone villas, each thoughtfully designed in a modern, elegant style. Every villa is divided into independent floor units, offering flexible living options suitable for families.

The project features high-quality finishes and the use of top-grade modern materials to ensure lasting comfort and superior build quality.





# PORTFOLIO





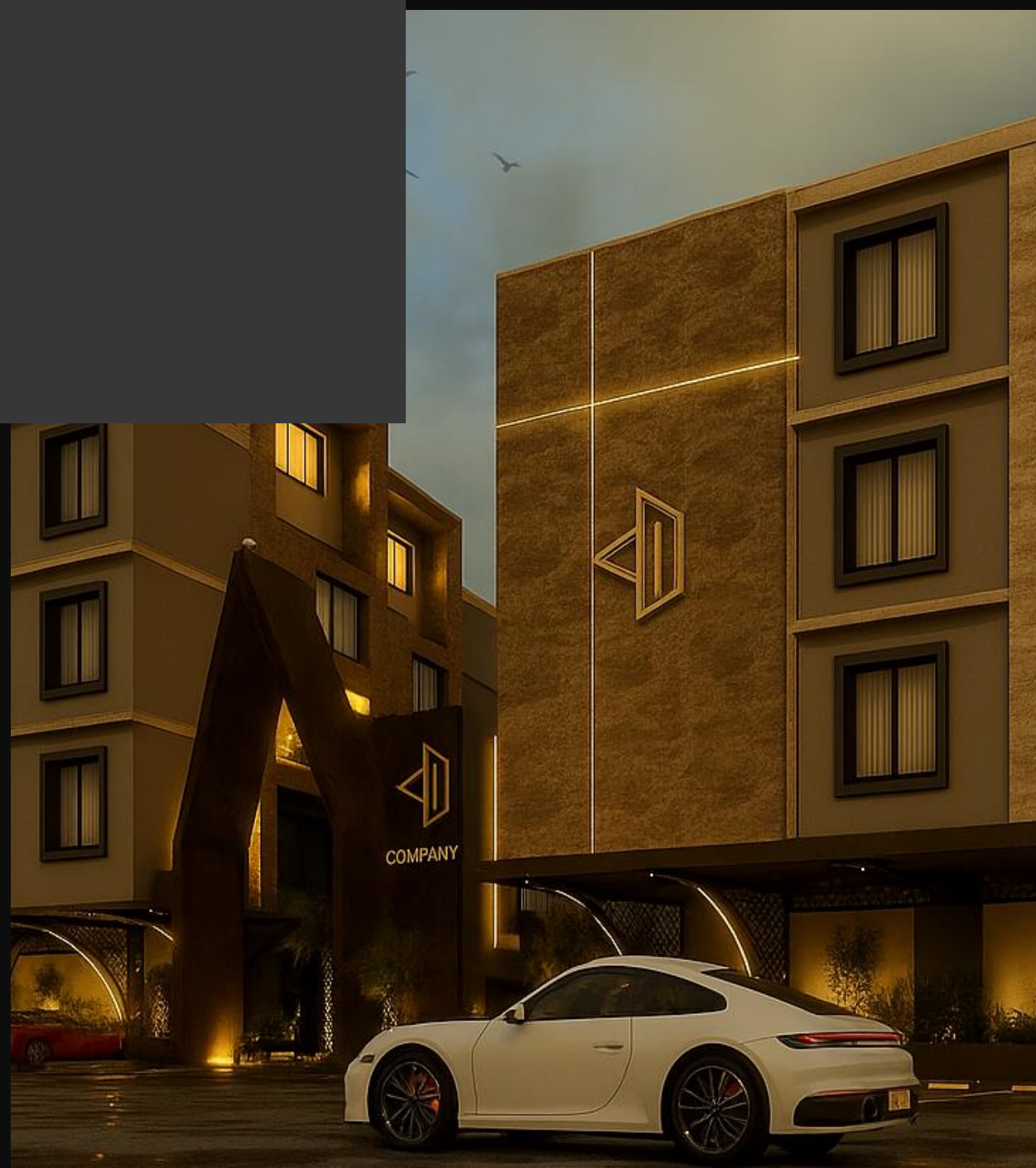
## Project 45

### Al A'arid District, Riyadh, Saudi Arabia

Project 45 is a residential complex offering ownership apartments, designed with the distinctive Salmanian architectural style that blends heritage with modernity.

The project complies with the new urban code, ensuring harmony between aesthetic appeal and regulatory standards. Built with the finest materials and modern construction techniques, it delivers exceptional quality and lasting comfort.

*THE SALMANIAN STYLE BLENDS SAUDI HERITAGE WITH MODERN DESIGN, FOCUSING ON SIMPLICITY AND HARMONY.*





1



2



# PORTFOLIO

3



4





Aljamee Real Estate  
Development CO.

Project 35 is a modern  
residential development  
featuring ownership  
apartments designed with a  
contemporary architectural  
style that meets residents'  
needs and provides a  
comfortable, modern living  
environment. The project has  
been built using the highest  
quality and most advanced  
materials to ensure  
exceptional standards of  
quality and comfort.

## Project 35







PORTFOLIO





Executed

Projects



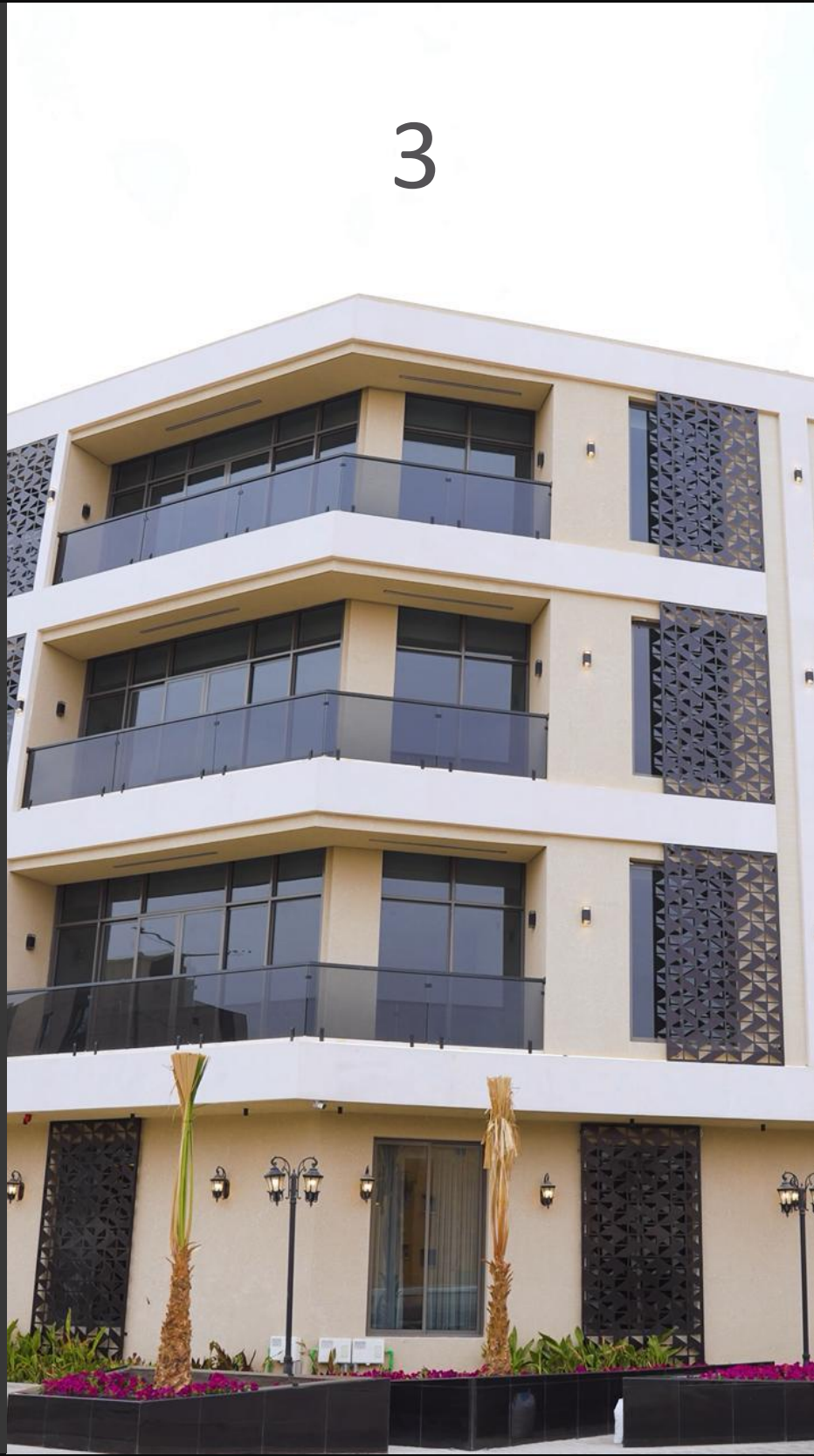


# Aljamee Real Estate Development CO.



- Design
- Develop
- Fit - out









PORTFOLIO





# APARTMENT A1



- design
- renovation
- fit - out





AFTER



PORTFOLIO



PATH

& PROCESS

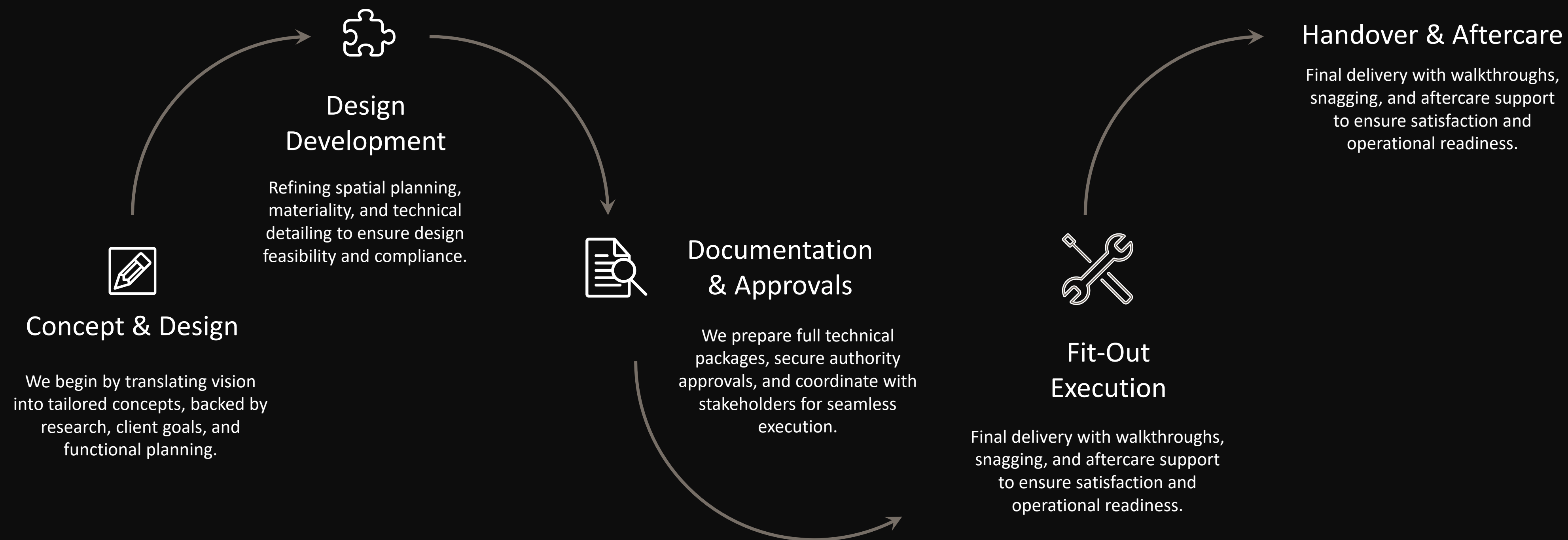
section





# OUR PROCESS

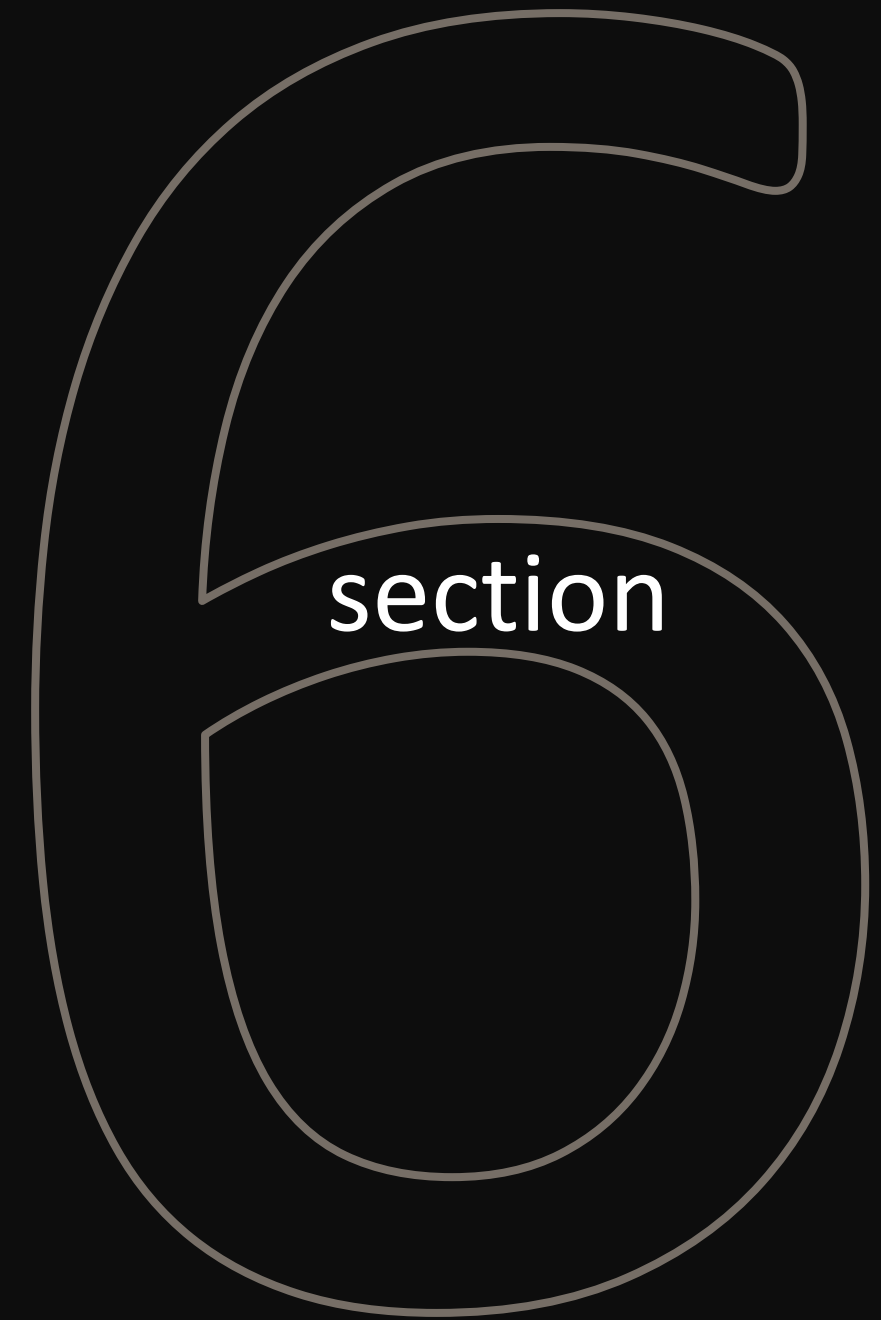
*Providing integrated solutions from concept to completion, ensuring quality, functionality, and aesthetic value.*





OUR

CONNECTIONS



## OUR PARTNERS

Asaseyat is a certified engineering office and one of our key strategic partners in delivering compliant and approved construction projects. Their expertise ensures all documentation, supervision, and permit processes meet regulatory standards.



- Engineering document verification and stamping
- Technical supervision for large-scale construction projects
- Liaison with government and municipal authorities
- Obtaining construction and building permits
- Ensuring compliance with local codes and regulations
- Providing certified reports and engineering approvals

Their support enables us to move forward efficiently through regulatory frameworks and focus on delivering high-quality, approved developments.

# ABDULMAJEED

## AL SAFFAR

CEO – ASASEYAT

Bring to the table win-win survival strategies to ensure proactive domination. At the end of the day, going forward, a new normal that has evolved from generation X is on the runway heading towards a streamlined cloud solution.



# OUR SUPPLIERS

الغملاس  
ALGHOMLAS

Leading provider of high-quality blinds, curtains, and shading solutions for residential and commercial interiors.

مفوشات الرقييت  
ALRUGAIB FURNITURE

One of Saudi Arabia's premier furniture brands, offering a wide range of modern and classic interior furnishings.



Regional furniture retailer known for contemporary designs and ready-made home solutions across the Middle East.

Ashley  
HOMESTORE

International furniture brand offering stylish, affordable collections for every room in the home.

## Trusted Partnerships

*We maintain strong, long-term relationships with our suppliers built on mutual trust, quality commitment, and aligned values. These partnerships ensure that every project we deliver is supported by reliable materials, timely logistics, and exceptional craftsmanship.*

-  
Le Corbusier



# OUR SUPPLIERS



Leading provider of high-quality blinds, curtains, and shading systems for residential and commercial interiors.



Trusted supplier of ready-mix concrete and cement-based solutions for structural and architectural applications.



Reliable partner for high-end furniture and interior solutions, supporting fit-out works with durable products.



Versatile supplier offering a wide range of furnishing, hardware, and construction materials for turnkey projects.

## *Built on Trust & Quality*

*Our suppliers play a vital role in our success. Through long-standing partnerships grounded in reliability, efficiency, and mutual commitment to excellence, we are able to deliver high-quality outcomes across every project.*

## OUR SUPPLIERS



**SAUDI  
MADE**

*Proudly Saudi Made*

*As a Saudi born company, we are proud to source and collaborate with Saudi Made suppliers. From materials to manufacturing, our commitment to local craftsmanship reflects our belief in national talent, quality, and innovation. Supporting local isn't just a choice it's part of our identity.*



LETS

CONNECT





# Locations



## Contact Us

### EMAIL

DISENAARCHITECTS@GMAIL.COM

### ADDRESS

RIYADH, ALOLAYA

### WEBSITE

DISENAARCH.com

### WEBSITE



@DISENAARCHITECTS

DISENA  
ARCHITECTS



